



# Flat 3 2 The Square

Buxton, SK17 6AZ

£275,000



# Flat 3 2 The Square

Buxton, SK17 6AZ

Tenure Leasehold Council Tax Band C



Located within the prestigious Grade II\* listed building, The Square, this property is distinguished by its elegant arched covered colonnade walkways and is surrounded by architecturally significant landmarks, including the Buxton Opera House and the Crescent thermal spa hotel.

Situated on the second floor, this duplex apartment offers spacious versatile accommodation. Ideal renovation project to make a primary home or rental opportunity. Offered with no onward chain.

An internal viewing is highly recommended to see the potential this property has to offer.

## Directions

From our Buxton office turn right at the junction and proceed to the Spring Gardens roundabout. Bear left onto Manchester Road and take the second left onto Fountain Street. The Square is located on the left hand side.

## GROUND FLOOR

Communal entrance door on the ground floor into communal entrance hall with decorative original tiled flooring. Stairs leading to first and second floor.

## SECOND FLOOR

Personal entrance door to hallway.

### Hallway

12'6" x 6'7" (3.81m x 2.01m)

Original wooden floorboards. Sash window to side. Stairs to first floor.

### Sitting Room

22'9" x 15'9" (6.93m x 4.80m)

Original wooden floorboards. Two sash windows to front. Three radiators.

### Bedroom One

16'1" x 9'10" (4.90m x 3.00m)

Sash window to side. Radiator. Built in wardrobe.

### Inner Hallway

20'4" x 3'5" (6.20m x 1.04m)

### Bathroom

11'10" x 5'9" (3.61m x 1.75m)

Sash window to side. Panel enclosed bath. Separate shower enclosure. Low level W.C. Wash hand basin. Vinyl flooring.

### Utility Room

10'5" x 5'11" (3.18m x 1.80m)

Wall mounted boiler. Range of base and eye level units. One and a half bowl sink unit. Space for washing machine and tumble dryer. Cork tiled flooring.

### Kitchen

10'5" x 9'9" (3.18m x 2.97m)

Range of base and eye level units. One and a half bowl stainless steel sink unit. Space for fridge/freezer and cooker. Sash window to side. Wooden flooring. Radiator. Opening to dining room

## FIRST FLOOR

Landing with cupboard.

### Bedroom Two

17'2" x 10'8" (5.23m x 3.25m)

Velux window to side. Radiator. Exposed beams.

### Bedroom Three

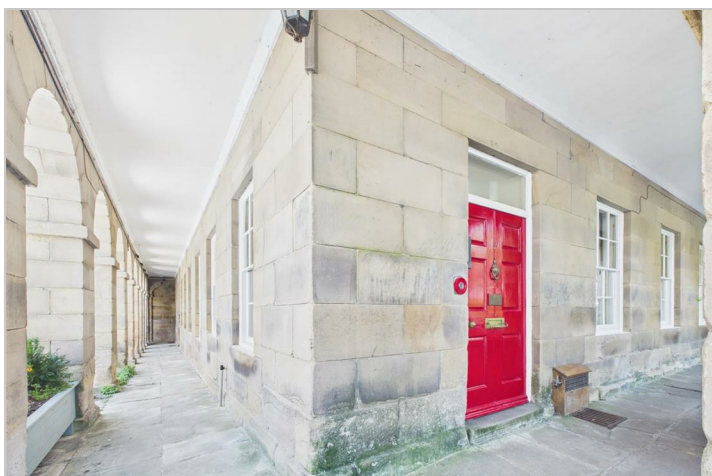
11'8" x 10'6" (3.56m x 3.20m)

Velux window to front. Radiator. Exposed beams.

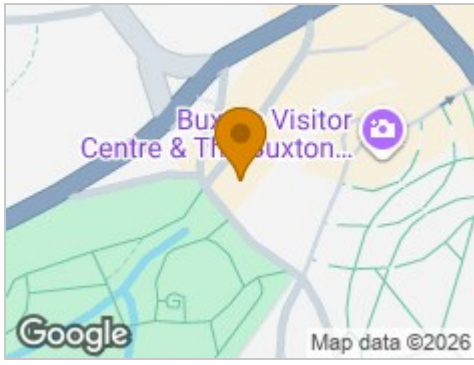
### Bedroom Four

13'7" x 7'0" (4.14m x 2.13m)

Velux window to rear. Radiator. Exposed beams



## Road Map



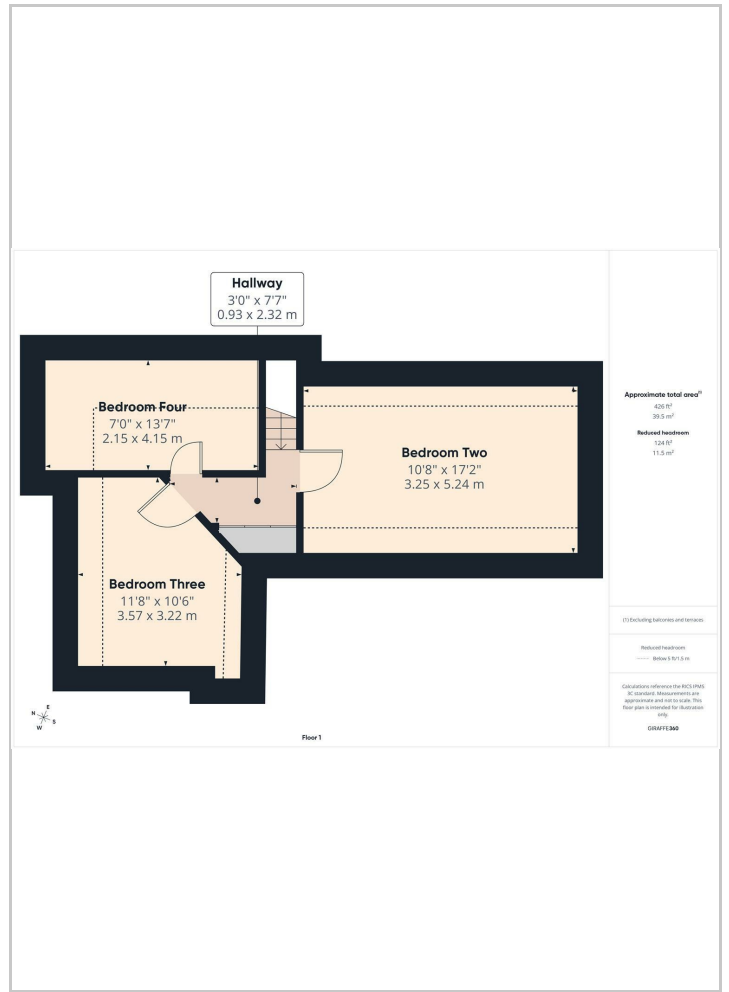
## Hybrid Map



## Terrain Map



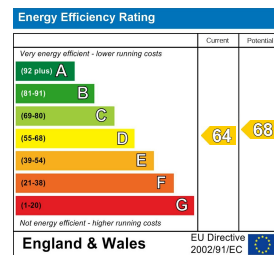
## Floor Plans



## Viewing

Please contact our Mellors Estate Agents Office on 01298 24383 if you wish to arrange a viewing appointment for this property or require further information.

## Energy Efficiency Graph



### Important Notice

Mellors Estate Agents, their solicitors and joint agents give notice that:

- They are not authorised to make or give any representations or warranties in relation to the property either here or elsewhere, either on their own behalf or on behalf of their client or otherwise. They assume no responsibility for any statement that may be made in these particulars. These particulars do not form part of any offer or contract and must not be relied upon as statements or representation of fact.
- Any areas, measurements or distances are approximate. The text, photographs and plans are for guidance only and are not necessarily comprehensive. It should not be assumed that the property has all necessary planning building regulation or other consents and Mellors Estate Agents have not tested any services, equipment or facilities. Purchasers must satisfy themselves by inspection or otherwise.

1 Grove Parade, Buxton, Derbyshire, SK17 6AJ  
 Tel: 01298 24383 Email: info@mellors.org.uk www.mellors.org.uk